

Application:

Corro•Gard™ NDA series Luminaires made of Krydon® fiberglass-reinforced polyester are used to provide incandescent lighting:

- indoors or outdoors in industrial wet or dirty locations and where corrosion is a problem
- in marine applications, above and below deck, where salt spray corrosion shortens fixture life
- in food and beverage industries where frequent wash-downs are necessary
- for walkways, bridges, tunnels, security lighting, cold storage facilities, garages, coal handling areas, shipboard, processing plants, and nuclear generating plant containment areas

Features:

- Luminaire is molded Krydon® for excellent corrosion, heat, and impact resistance.
- Accommodates all popular incandescent lamps up to 300W, PS-25.
- Attractive modern design and color complement other Corro•Gard products.
- Weighs only 8½ lbs. complete with lamp and globe.
- Medium screw base porcelain lamp socket has a vibration absorbing mounting bracket.
- All joints are gasketed to ensure watertightness.
- Configured glass globe reduces glare.
- Corro•Gard reflectors made of Krydon® reflect light better than porcelainized steel; do not yellow or discolor with age; cannot chip, peel, rust or dent.

Standard Materials:

- Bodies and reflectors – Krydon® fiberglass-reinforced polyester material
- Globes – configured heat-resistant glass

Standard Finishes:

- Bodies – natural
- Reflectors – natural, high reflectance white

Options:

- TEFLON® coating on G24 globe for increased shatter protection. add suffix S808.



NDA Series Ordering Information For Pendant Mounting

Hub Size	Max. Lamp Size	Body Only Cat. #	Globe Only Cat. #	Body With Globe† Cat. #
¾"	300W PS-25 Med. Base 120V	NDA22	G24	NDA22G

Temperature Performance Data: (based on 40°C ambient)

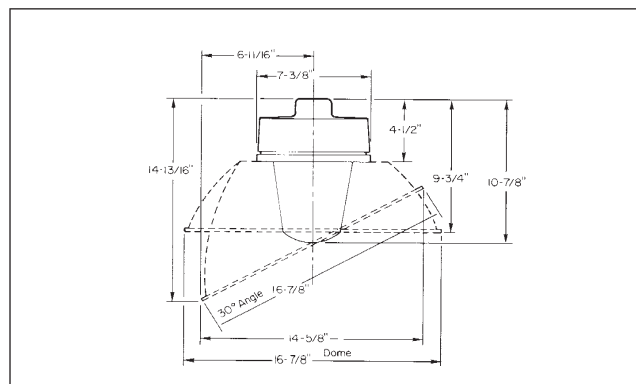
Max. Lamp Size	T-Number	Supply Wire (°C)
300W	T2A	150°C

(Note: Fixtures are not marked with T-Number.)

Certifications and Compliances:

- UL Standard: 1598
- Wet Locations
- Suitable for 40°C ambient temperature

Dimensions



Accessories & Parts Globe



Color	Cat. #
Clear (heat resisting)	G24
Green	G25
Blue	G26
Red	G27
Amber	G28

Guard



Cat. # P21

Replacement Lamp Receptacles with Strap Shock Absorbing

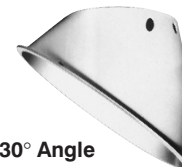


Cat No. NV84

Reflectors (Order separately)



Dome



30° Angle

Type	Cat. #
Dome	RD725 (RD75)
30° Angle	RA725 (RA75)